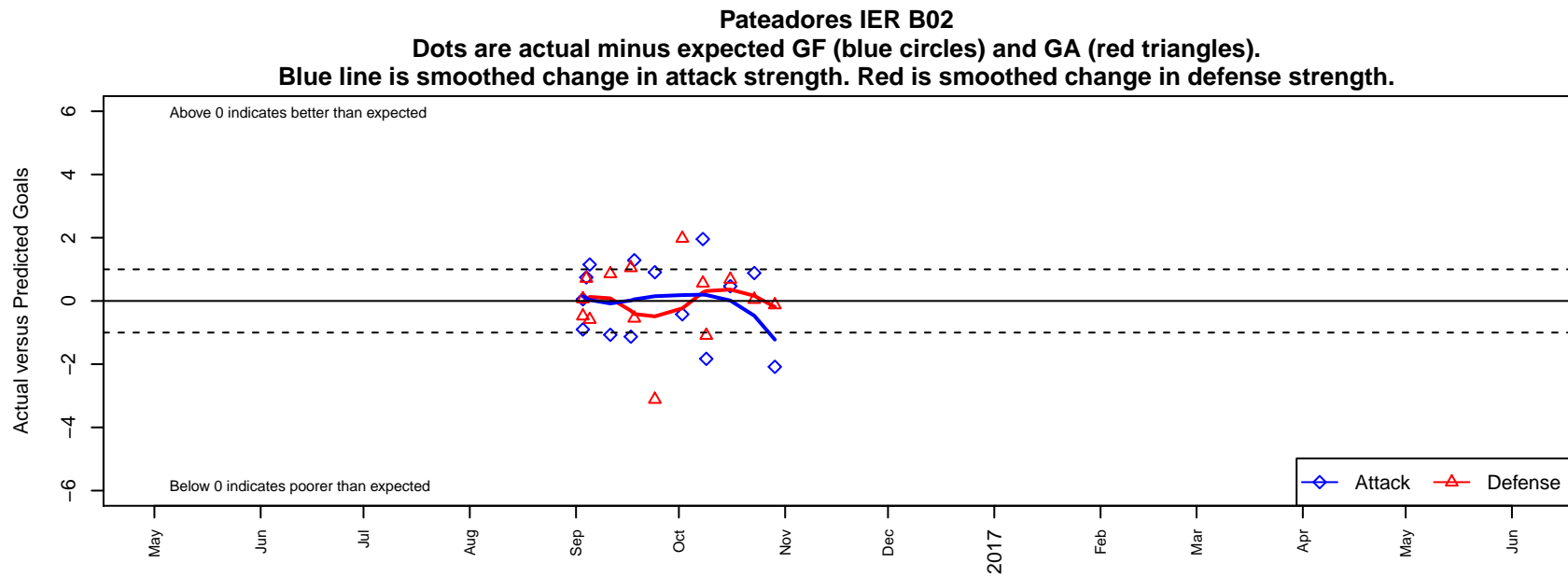


## Pateadores IER B02

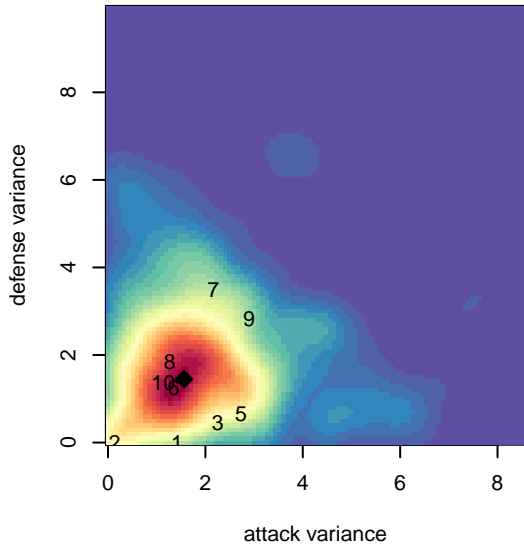
, CAS  
B02 total strength=1865  
attack=56.85 defense=28.3  
fall league = SCDL FI1 U15

alt names used:  
PATEADORES IER 2002  
Pateadores – IER B 2002

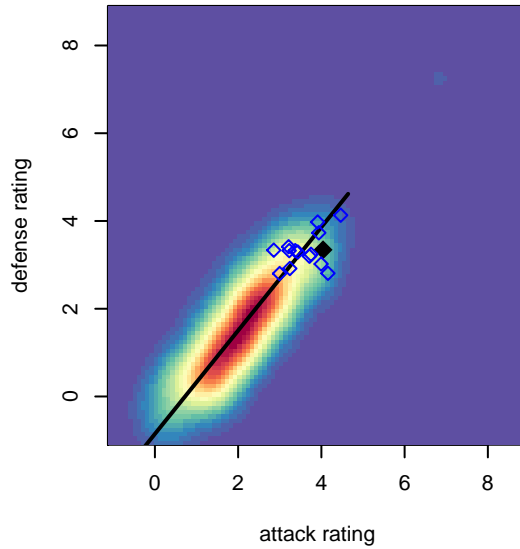
Venues played:  
2016 NHB Cup Flight 1  
2016 SCDL FI1 U15



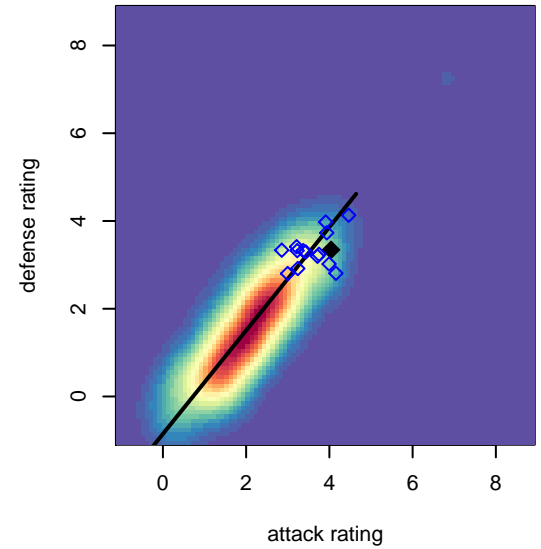
**attack and defense variance (black dot)  
relative to other teams  
and top 10 in region**



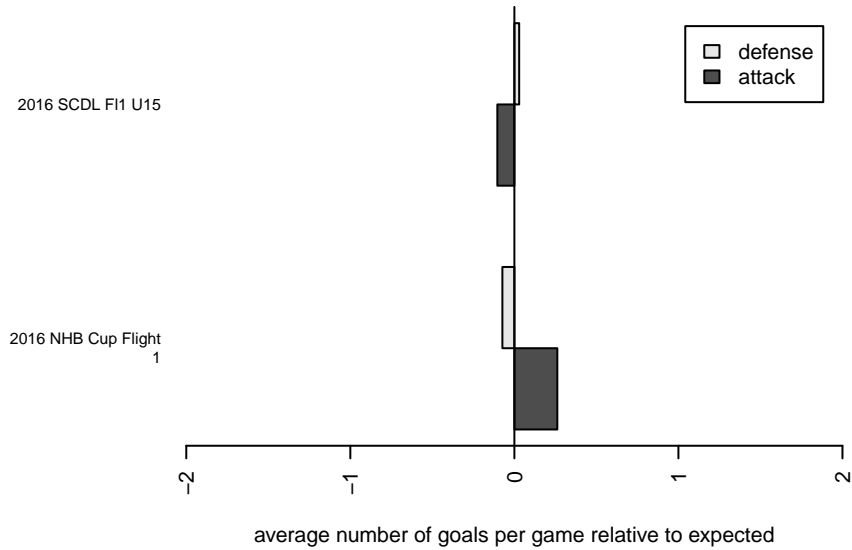
**attack and defense rating  
relative to others at age  
and all opponents in last 13 months**



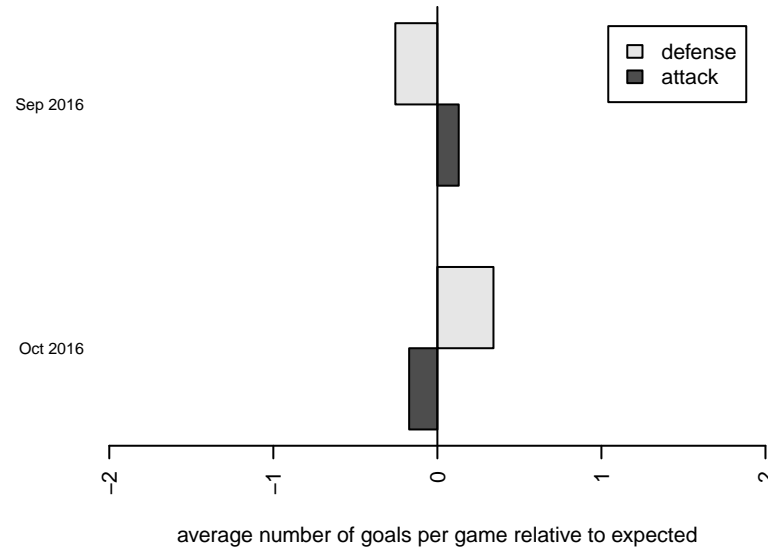
**attack and defense rating  
relative to others at age  
and all opponents in last 13 months**



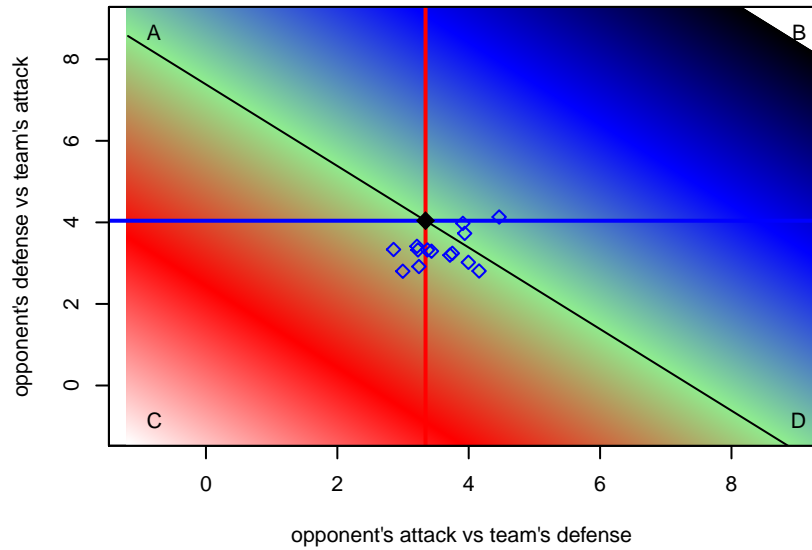
**Performance relative to 13 month average**



**Performance relative to 13 month average**



Distribution of opponents  
 Red = Lose zone, Blue = Win zone, Green = Even  
 Black line separates win/lose zones



lot. A=Neither has attack advantage, B=Opponent has both attack and defense advantage, C=Opponent has both attack and defense disadvantage, D=Both have

<b>date</b>	<b>home</b>		<b>away</b>		<b>venue</b>	<b>pred.home</b>	<b>pred.away</b>
2016-10-29	Pateadores IER B02	1	Strikers FC SB Black B02	1	2016 SCDL F11 U15	3.08	0.87
2016-10-23	Pateadores IER B02	3	Temecula Valley Hawks B02	1	2016 SCDL F11 U15	2.12	1.05
2016-10-16	Strikers FC North B02	0	Pateadores IER B02	4	2016 SCDL F11 U15	0.68	3.53
2016-10-09	CDA Slammers Vargas B02	3	Pateadores IER B02	1	2016 SCDL F11 U15	1.91	2.83
2016-10-08	Pateadores IER B02	4	Real So Cal White B02	0	2016 SCDL F11 U15	2.04	0.56
2016-10-02	Pateadores IER B02	1	West Coast FC B02	0	2016 SCDL F11 U15	1.42	1.98
2016-09-24	LA Galaxy South Bay Gold B02	4	Pateadores IER B02	3	2016 SCDL F11 U15	0.88	2.09
2016-09-18	Pateadores IER B02	4	Strikers FC South Coast B02	2	2016 SCDL F11 U15	2.71	1.45
2016-09-17	LA Galaxy South Bay Elite B02	0	Pateadores IER B02	1	2016 SCDL F11 U15	1.05	2.13
2016-09-11	Beach FC South Bay Black B02	1	Pateadores IER B02	2	2016 SCDL F11 U15	1.86	3.07
2016-09-05	Earthquakes Sacramento B02	4	Pateadores IER B02	2	2016 NHB Cup Flight 1	3.41	0.85
2016-09-04	La Roca Futbol Club Premier TJ B02	1	Pateadores IER B02	2	2016 NHB Cup Flight 1	1.71	1.25
2016-09-03	Sparta United Premier B02	2	Pateadores IER B02	2	2016 NHB Cup Flight 1	1.52	1.95
2016-09-03	Celtic Academy B02	1	Pateadores IER B02	1	2016 NHB Cup Flight 1	1.06	1.90